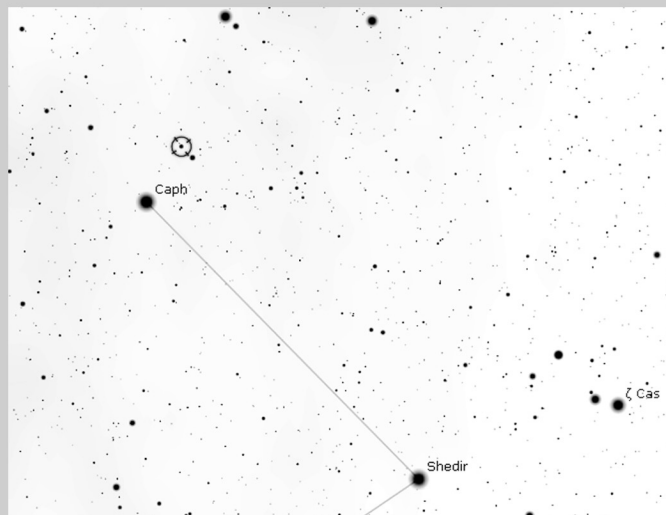
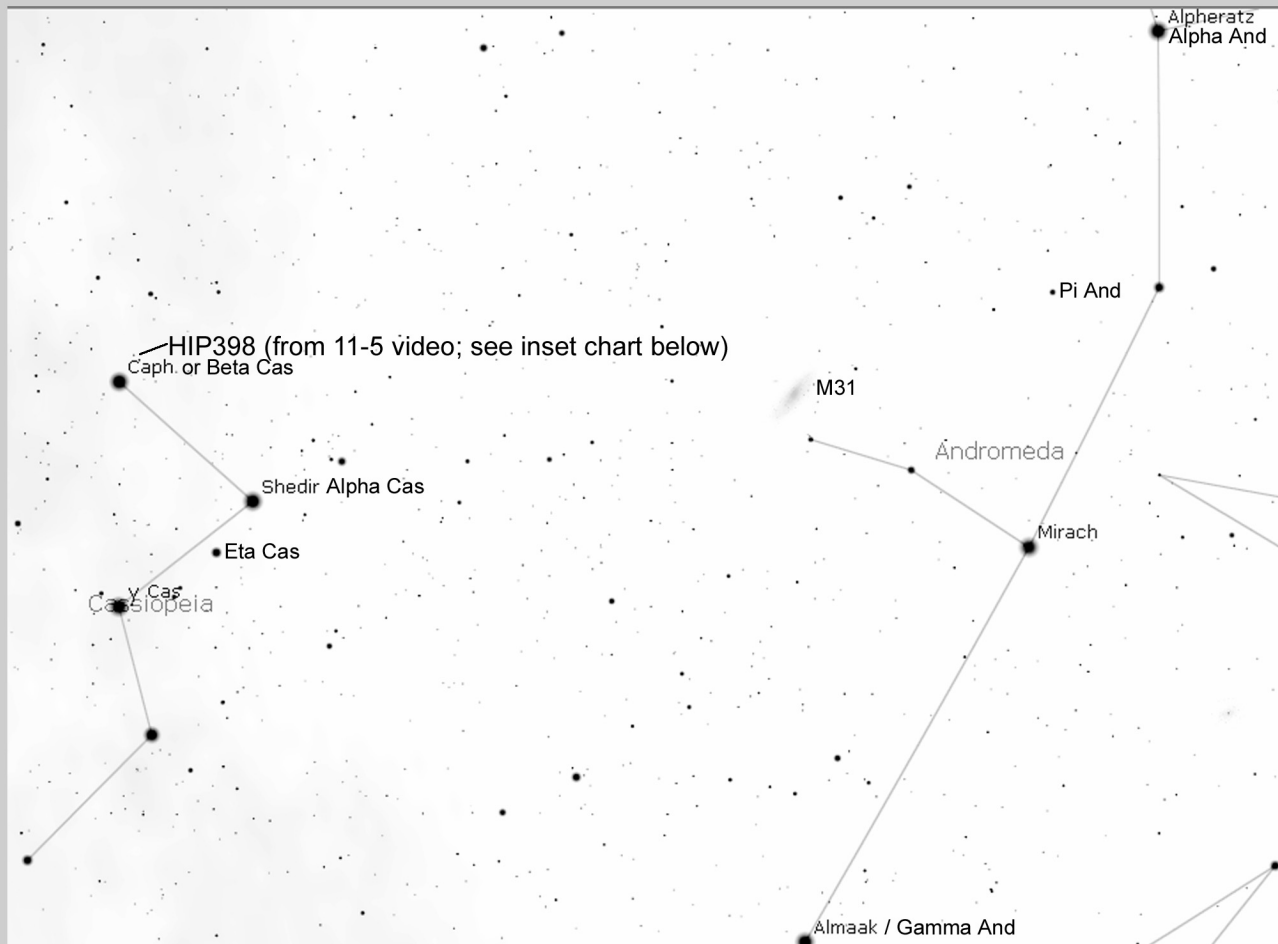


Eyes on the Sky

Keep your eyes on the sky, so you can see what's UP!

Herschel double stars in Andromeda and Cassiopeia



Constellation	Bayer	H. Discovery	Primary	Secondary	Separation
And	alpha	07/21/81	2.22	11.11	90"
And	gamma	08/25/79	2.31	5.02	10"
And	pi	08/25/80	4.36	7.08	8"
Cas	(near) beta	08/25/82	6.7	9.3	4"
Cas	alpha	08/31/80	2.35	8.98	64"
Cas	eta	08/17/79	3.52	7.36	11"
UMi	alpha	08/17/79	2.1	9.1	18"

Use this chart to locate a number of double stars that William Herschel discovered and catalogued while searching the night sky. Most of these are easy to locate, even in urban areas, though nearly all will require a telescope at medium to high magnification to see. Take your time as you work to identify each; the larger the difference in the magnitudes between stars, the more difficult it can be to spot the dimmer of them. NOTE: Polaris is not shown on this map.